



EDG-LED-EM-R

BY WESTERN LIGHTING

**LED EDGE LIT
RECESSED EXIT SIGN
2 HOUR**

NI-CAD BATTERY BACK UP

SPECIFICATIONS

HOUSING: Welded 20 gauge cold rolled steel is powder coated after fabrication. Recessed housing is a shallow 3 1/2" deep by 4" wide by 13 7/8" long. Trim plate, 5 5/8" x 15 1/2", is brushed stainless steel, beveled and gasketed to smoothly meet ceiling without light leaks.

MOUNTING: 5/16" diameter knockouts are provided on top center, and at each end. Four hanger bar clips are included and fit slotted sides for ceiling depth adjustment. Hanger bars by others.

FINISH: Standard trim plate is stainless steel "-SS".
 Bushed brass "BBR".
 Polished brass "PBR".
 Polished chrome specify "CH".

INSCRIPTION: Letters are a full 6" high x 3/4" stroke, deep engraved around the edges, screened on a 3/16" acrylic panel. The panel has polished edges for a clear crisp look. A mirror divider plate is included for double panel signs. Arrows are chevron style beside inscription. Red letters on clear "-R/C".
 Green letters on clear "-G/C".

LAMPS: Red or green low wattage high intensity Light-Emitting Diodes.
 Red LED emits 900 mcd at 660 nanometers.
 Green LED emits 1000 mcd at 525 nanometers.

ELECTRICAL: Operates on either 120 or 277 volt input. Internal switches are set upon installation. Low current transformer board circuit. Red less than 57 ma @ 120V, less than 26ma @ 277v.
 Green less than 43 ma @ 120v, less than 20 ma @277V.

BATTERY: Battery back up feature uses 6v Nickel-Cadmium battery. 2 hour runtime exceeds standard (NFPA) 90 minute requirement. Extended run times up to 10 hours available with alternate batteries (-EXRUN). Consult factory.

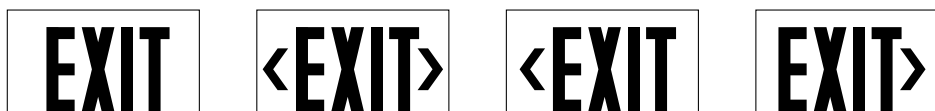
OPTIONS: Recessed wall mounted with bent panel
 "-RWBP".
 Inverted lettering "-INV".
 For air plenum ceiling installation "-PLEN".
 Self-diagnostic tester "-SD".
 Emergency Flash "-EFL".
 Emergency Buzzer "-EBZ".
 Fire alarm interface, Flash "-FAF".
 Fire alarm interface, Flash & Buzzer "-FAFB".

CODES: Complies with UL 924, NEC and NFPA 101 Life Safety Code.ETL listed.

DIMENSIONS: Panel size is as follows: EXIT
 Height 7 1/8"
 Width 13 5/8"

ORDERING CODE

SERIES	INSCRIPTIONS			VOLT	FINISH	OPTIONS		
EDG-LED-EM-R	+			+	+	+		
R (RECESSED)	(*CODE)-R/C (*CODE) -G/C			120 277	SS BBR PBR CH	INV PLEN SD EXRUN EFL EBZ FAF FAFB		
CODE	S I N G L E F A C E				D O U B L E F A C E			
INSCRIPTIONS	NO ARROW	ARROW RIGHT	ARROW LEFT	DOUBLE ARROW	NO ARROW	ARROW RIGHT	ARROW LEFT	DOUBLE ARROW
EXIT	3 EXIT	6 EXIT>	9 <EXIT	12 <EXIT>	18 EXIT	21 <EXIT	21 EXIT>	24 <EXIT>

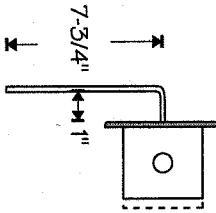
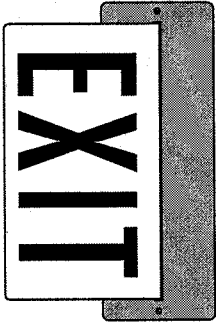
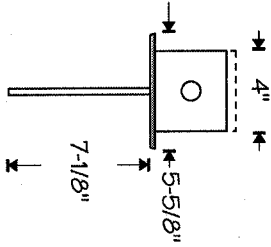
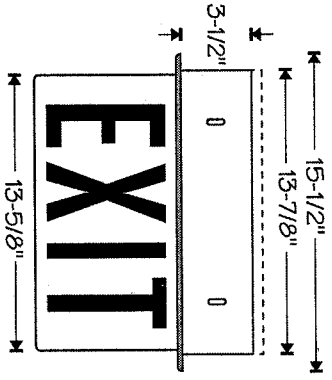


WESTERN LIGHTING, INC.

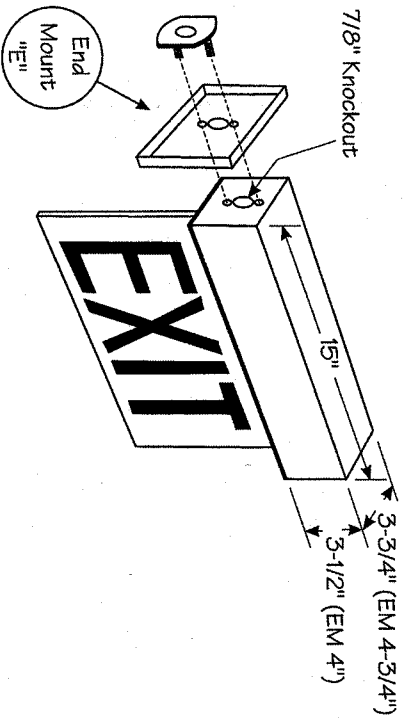
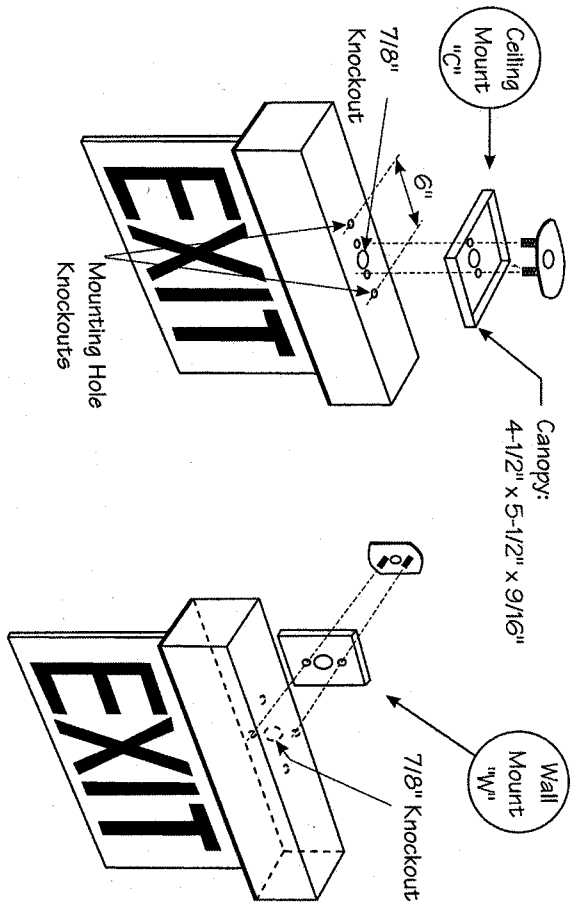
2349 N. 17th Ave. • Franklin Park, IL 60131-3432
 (847) 451-7200 • Fax: (847) 451-7275



Recessed



Surface



Drawing #: EDG-LED1.1
Date: 6-10-98
Revised:
Scale: NTS

EDG-LED Series Exit Fixture Dimensions



WESTERN LIGHTING, INC.
2349 N. 17th Ave. Franklin Park, IL 60131
(847)451-7200 • Fax (847)451-7275

