

TYPE _____

EDG-LED-EM-C

BY WESTERN LIGHTING

**LED EDGE LIT EXIT SIGN
SURFACE / CEILING MOUNTED
2 HOUR
NI-CAD BATTERY BACK UP**

SPECIFICATIONS

HOUSING: Welded 20 gauge cold rolled steel is powder coated after fabrication. Lamps, circuit board and batteries are contained in this shallow 3 1/2" deep by 3-3/4" wide by 15" long housing. **STAINLESS STEEL ALSO AVAILABLE** (See finish).

FINISH: Standard is white enamel "-WH".
Optional finishes:
Black "-BL".
Bronze "-BZ".
Brushed Stainless Steel "-SS".
For custom colors, specify "-SP".

MOUNTING: 7/8" diameter knockouts are provided on top center. Canopy for outlet box mounting is included.

INSCRIPTION: Letters are a full 6" high x 3/4" stroke, deep engraved around the edges, screened on a 3/16" acrylic panel. The panel has polished edges for a clear crisp look. A mirror divider plate is included for double panel signs. Arrows are chevron style located beside inscription.
Red letters on clear "-R/C".
Green letters on clear "-G/C".

LAMPS: Red or green low wattage, high intensity, long life Light-Emitting Diodes.
Red LED emits 900 mcd at 660 nanometers.
Green LED emits 1000 mcd at 525 nanometers.

ELECTRICAL: Operates on either 120 or 277 volt input. Internal switches are set upon installation. Low current transformer board circuit. Red less than 57 ma @ 120V, less than 26ma @ 277v.
Green less than 43 ma @ 120v, less than 20 ma @277V.

BATTERY: Battery back up feature uses 6v Nickel-Cadmium battery. 2 hour runtime exceeds standard (NFPA) 90 minute requirement. Extended run times up to 10 hours available with alternate batteries (**-EXRUN**). Consult factory.

OPTIONS: Inverted lettering "-INV".
Self-diagnostic tester "-SD".
Emergency Flash "-EFL".
Emergency Buzzer "-EBZ".
Fire alarm interface, Flash "-FAF".
Fire alarm interface, Flash & Buzzer "-FAFB".

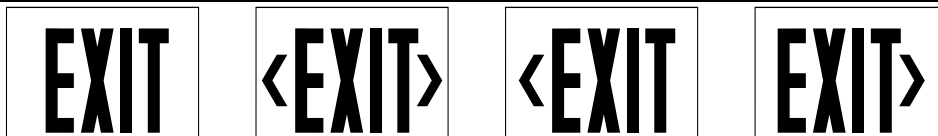
CODES: Complies with UL 924, NEC and NFPA 101 Life Safety Code. ETL listed.

DIMENSIONS: Panel size is as follows:

| | |
|--------|-------------|
| | <u>EXIT</u> |
| Height | 6-7/8" |
| Width | 13-5/8" |

ORDERING CODE

| SERIES | INSCRIPTIONS | | | VOLT | FINISH | OPTIONS | | |
|-----------------------------|--|----------------|---------------|-----------------|----------------------------|---------------------------------|---------------|-----------------|
| EDG-LED-EM-C | + | | | + | + | + | | |
| C (SURFACE CEILING MOUNTED) | (*CODE)-R/C (*CODE)-G/C *SEE BELOW | | | 120 277 | WH BL BZ SS SP | SD EXRUN EFL EBZ FAF FAFB | | |
| CODE INSCRIPTIONS | SINGLE FACE | | | | DOUBLE FACE | | | |
| | NO ARROW | ARROW RIGHT | ARROW LEFT | DOUBLE ARROW | NO ARROW | ARROW RIGHT | ARROW LEFT | DOUBLE ARROW |
| EXIT | 3 EXIT | 6 EXIT> | 9 <EXIT | 12 <EXIT> | 18 EXIT | 21 <EXIT | 21 EXIT> | 24 <EXIT> |

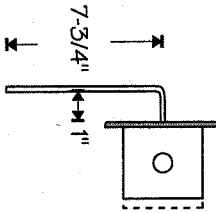
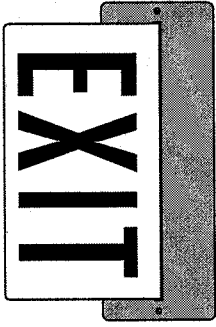
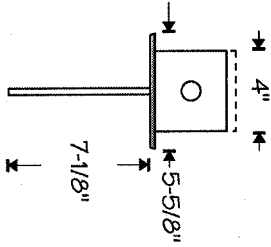
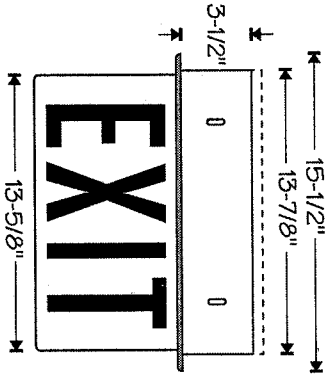


WESTERN LIGHTING, INC.

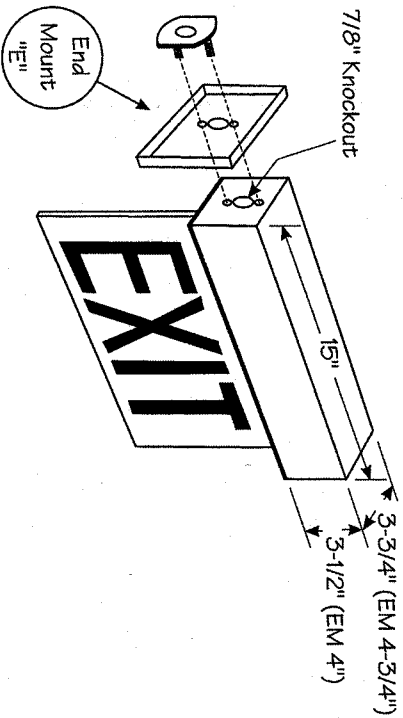
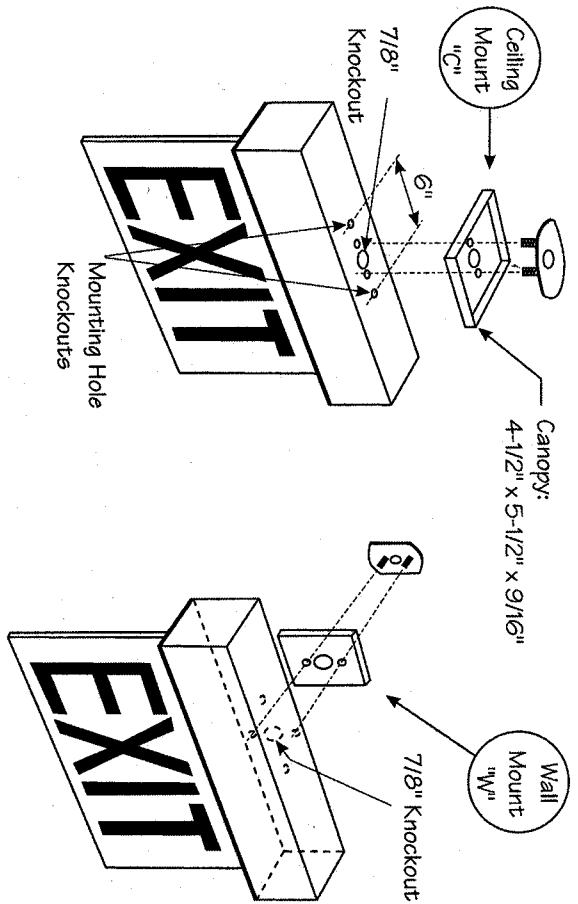
2349 N. 17th Ave. • Franklin Park, IL 60131-3432
(847) 451-7200 • Fax: (847) 451-7275



Recessed



Surface



Drawing #: EDG-LED1.1
Date: 6-10-98
Revised:
Scale: NTS

EDG-LED Series Exit Fixture Dimensions



WESTERN LIGHTING, INC.
2349 N. 17th Ave. Franklin Park, IL 60131
(847)451-7200 • Fax (847)451-7275

