



EDG-R

**EDGE LIT SIGN
EXIT, STAIRS OR FIRE ESCAPE
RECESSED CEILING OR WALL
MOUNTED
LED OR FLUORESCENT AC ONLY**

SPECIFICATIONS

HOUSING: Welded 20 gauge cold rolled steel is painted after fabrication. Lamps and ballasts are contained in this shallow 3 1/2" deep by 3 3/4" wide by 14 7/8" long housing. Fire Escape housing is

INSCRIPTION: Letters are a full 6" high x 3/4" stroke, deep engraved around the edges, screened on a 3/16" acrylic panel. The panel has polished edges for a clear crisp look. A divider plate is included for double panel signs. Arrows are full-length underneath inscription. Red letters on clear **"-R/C"**
Red letters on white (Chicago Code) **"-R/W"**
Green letters on clear **"-G/C"**
Green letters on white **"-G/W"**
Special inscriptions and graphics **"-S/G"**
Consult factory

LAMPS: **White LED array 4.5 Watt (Chicago Code)**
Fire Escape signs are 9 watt
"LED"
Two F8T5 fluorescent lamps,
(Fire Escape uses 2 F13T5 lamps)
each with a separate ballast. **"-FL"**

VOLTAGE: Available 120 or 277 volt input.
Please specify **"-120"** or **"-277"**.
(Dual-voltage not available)

TRIM FINISH: Standard is white enamel **"-WH"**
Optional finishes are: Black **"-BL"**
Dark Bronze **"-BZ"**
Brushed Stainless Steel **"-SS"**
For custom colors specify **"-S/P"** and consult the factory.

MOUNTING: Removable Access plate on top of fixture. Two 5/16" diameter knockouts are provided on top For 1/4" rod suspension
Available: "GMK" grid ceiling mounting kit
With 26" bar hangers. **Specify "GMK"**
Options: Recessed wall mounted with bent panel
Specify "RWBP"
Inverted lettering **"INV"**
For air plenum ceiling installation with gasketed access plate **"PLEN"**

CODES: Complies with UL 924, NEC and NFPA 101 Life Safety Code. ETL Listed
Fire Prevention Bureau, City of Chicago.

DIMENSIONS: Panel size is as follows:

	EXIT or STAIRS	FIRE ESCAPE
Height, no arrows	6 7/8"	6 -7/8"
Height, with arrows	8 3/4"	8-3/4"
Width	13 5/8"	23"

ORDERING CODE

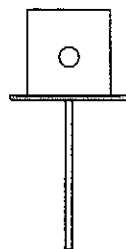
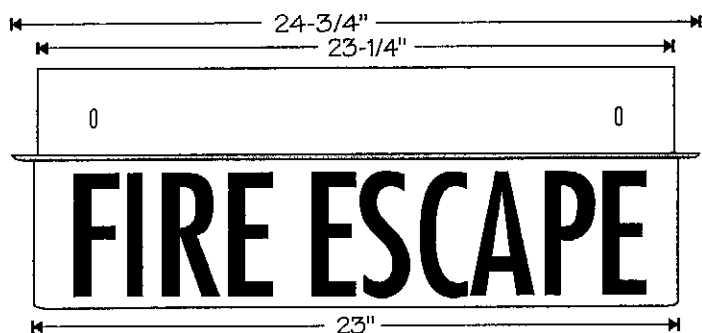
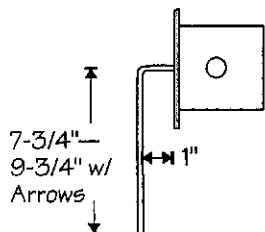
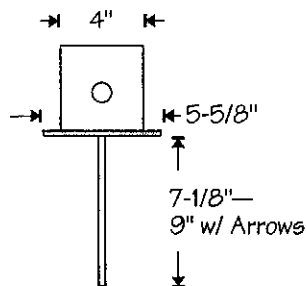
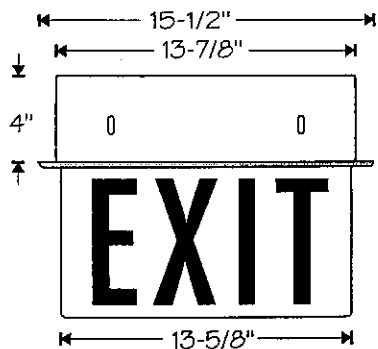
OPTIONS	INSCRIPTIONS	LAMP	VOLT	FINISH	OPTIONS			
EDG-R	+	+	+	+	+			
R (CEILING RECESS MOUNTED)	(*CODE)-R/C (*CODE)-R/W (*CODE)-G/C (*CODE)-G/W (*CODE)-SG *SEE BELOW	LED FL 277	120	SS WH BZ BLK S/P	GMK PLEN RWBP			
CODE INSCRIPTIONS	SINGLE FACE				DOUBLE FACE			
	NO ARROW	ARROW RIGHT	ARROW LEFT	DOUBLE HEAD ARROW	NO ARROW	ARROW RIGHT	ARROW LEFT	DOUBLE HEAD ARROW
EXIT	3	6	9	12	18	21	21	24
STAIRS	2	5	8	11	17	20	20	23
FIRE ESCAPE	1	4	7	10	16	19	19	22



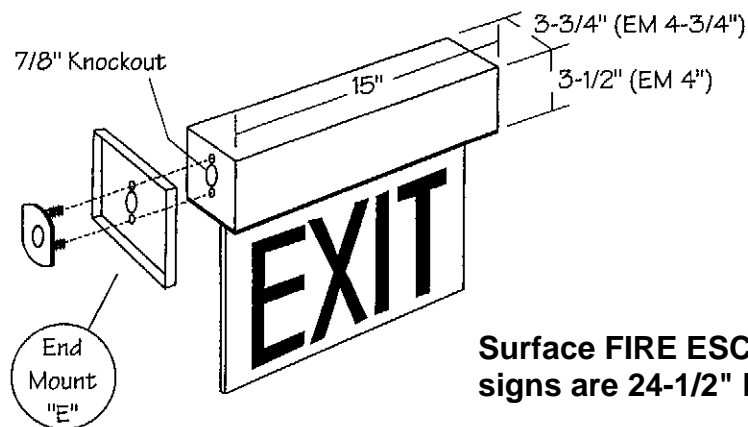
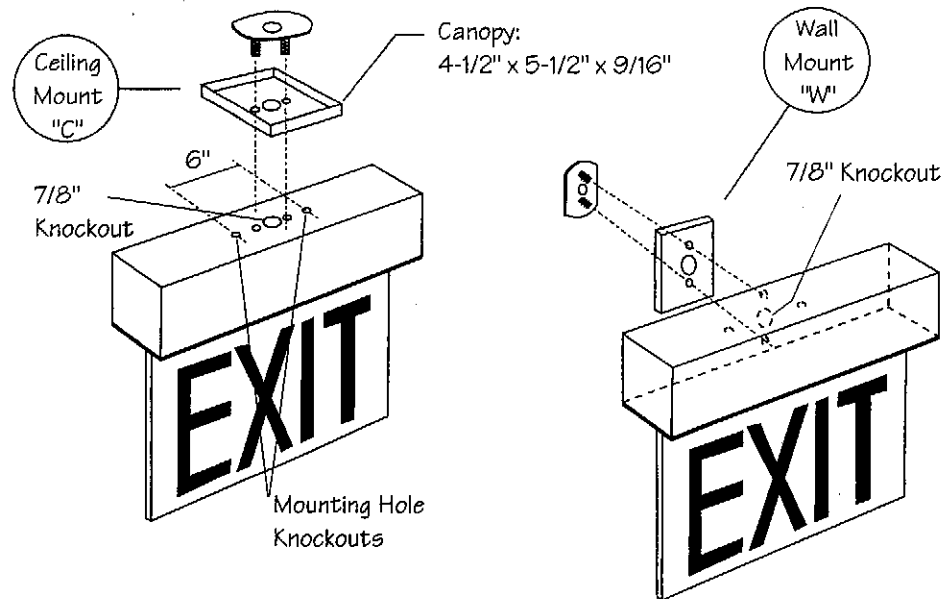
WESTERN LIGHTING, INC.
2349 N. 17th Ave. • Franklin Park, IL 60131-3432
(847) 451-7200 • Fax: (847) 451-7275



Recessed



Surface



Surface FIRE ESCAPE signs are 24-1/2" long

Drawing #: EDG1.2	Date: 10-17-00	Revised: 4/6/16	Scale: NTS
----------------------	-------------------	--------------------	---------------

EDG Series Exit Fixture Dimensions



WESTERN LIGHTING, INC.
2349 N. 17th Ave. Franklin Park, IL 60131
(847)451-7200 • Fax (847)451-7275

